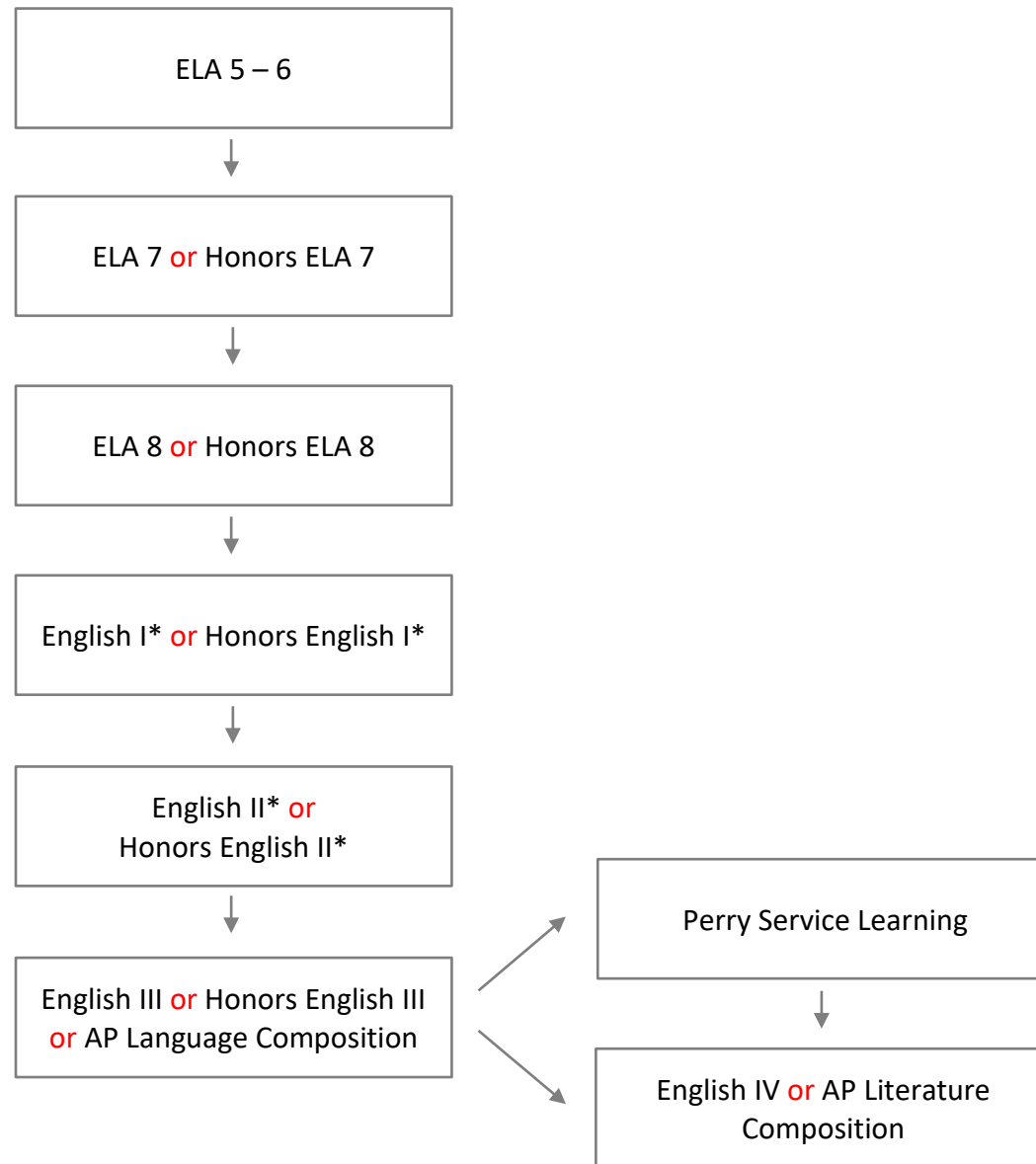




## ENGLISH/LANGUAGE ARTS COURSE MAP

Office of Curriculum, Instruction and Assessment

REV. 1/28/19



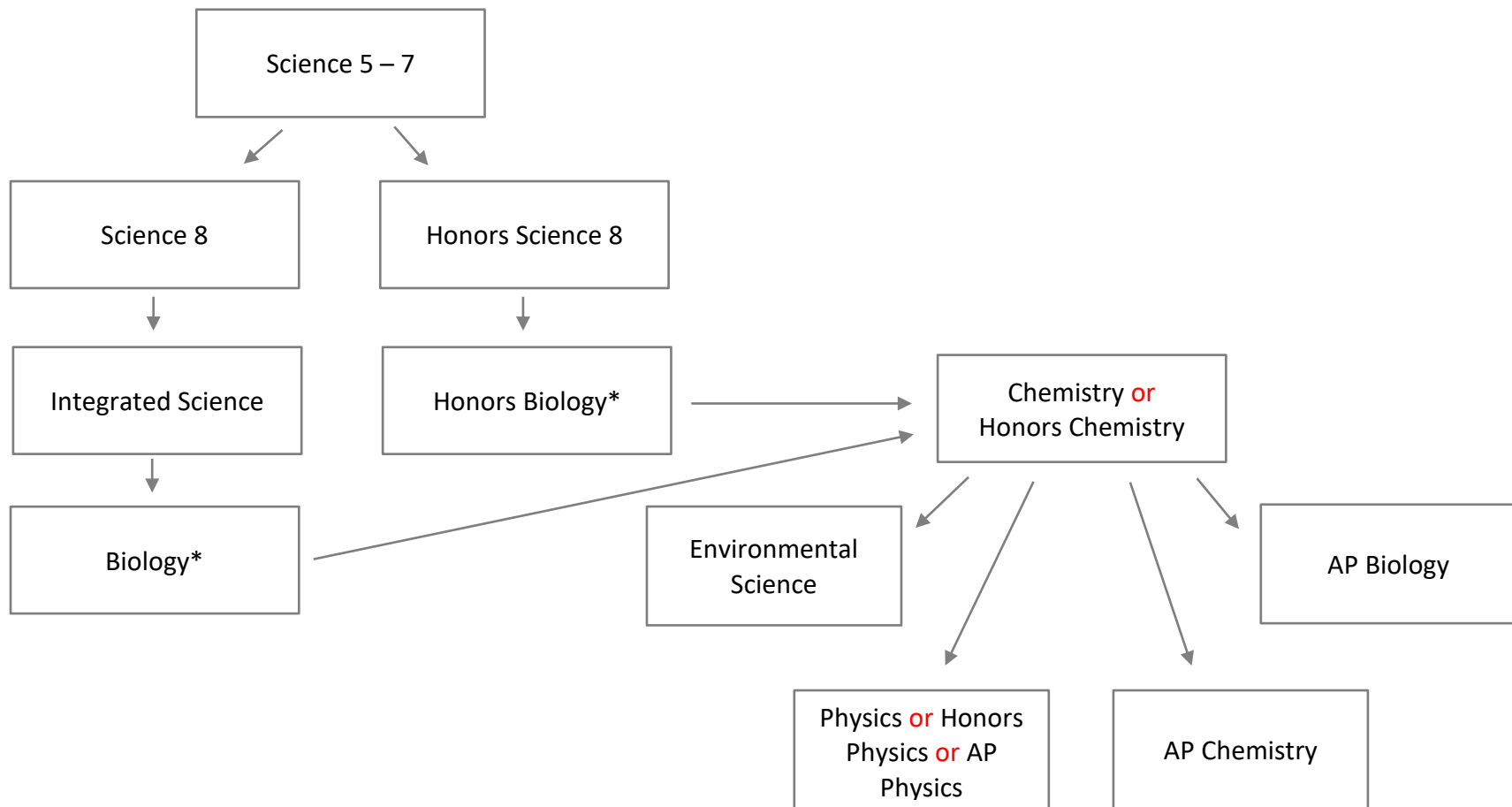
\*English I and English II are state high school graduation requirements that include a state end-of-course (EOC) exam. Four English credits are required for graduation. See your guidance counselor with any questions.



## SCIENCE COURSE MAP

Office of Curriculum, Instruction and Assessment

REV. 1/28/19



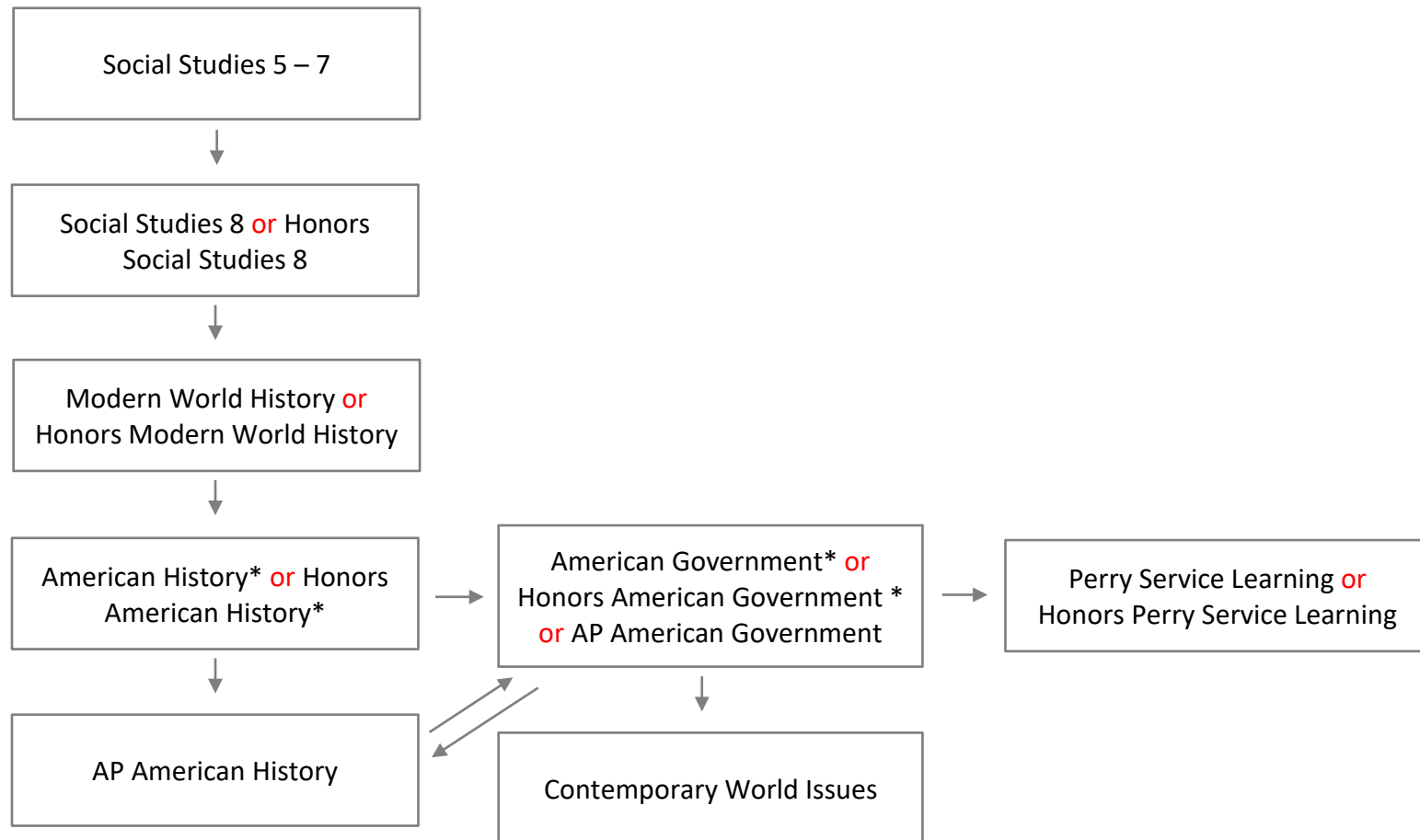
\*Biology is a state science high school graduation requirement that includes a state end-of-course (EOC) exam; the AP Biology exam may be a substitute exam for the Biology end of course State exam. Four science credits are required for graduation. See your guidance counselor with any questions.



# SOCIAL STUDIES COURSE MAP

Office of Curriculum, Instruction and Assessment

REV. 1/28/19



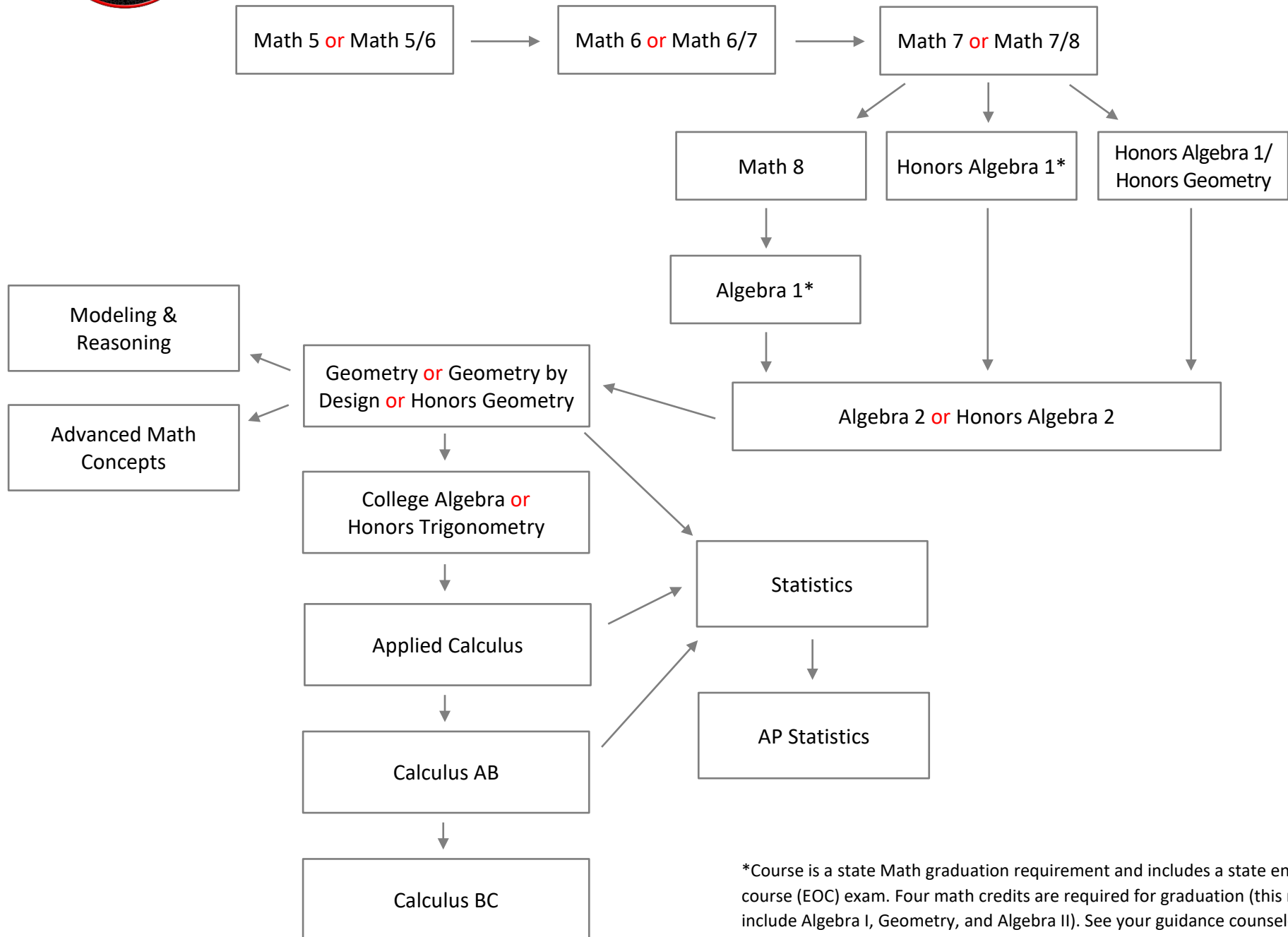
\*This course is a state Social Studies graduation requirement that includes a state end-of-course (EOC) exam - The AP US History exam may be a substitute EOC exam for the American History course. The AP Government exam may be a substitute EOC exam for the American Government course. **Four social studies credits are required for graduation.** See your guidance counselor with any questions.



# MATH COURSE MAP

Office of Curriculum, Instruction and Assessment

REV. 2/7/19

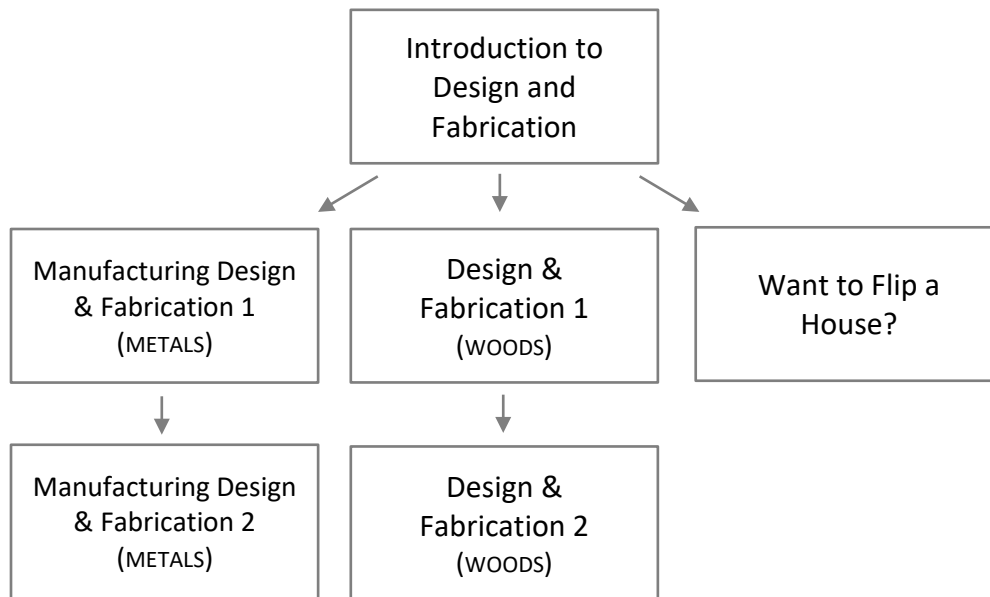
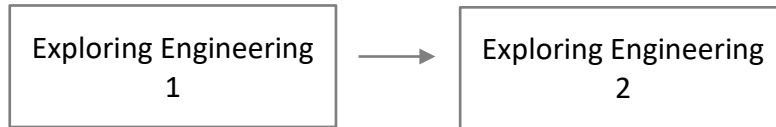
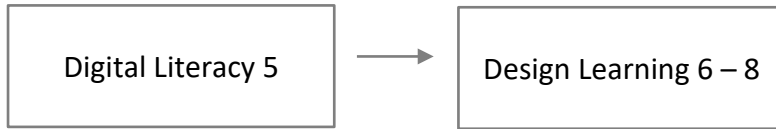


\*Course is a state Math graduation requirement and includes a state end-of-course (EOC) exam. Four math credits are required for graduation (this must include Algebra I, Geometry, and Algebra II). See your guidance counselor with any questions.



**DESIGN LEARNING COURSE MAP**  
Office of Curriculum, Instruction and Assessment

REV. 1/28/19



\*Dual Credit courses: high school and CCP credit



**WORLD LANGUAGE COURSE MAP**  
Office of Curriculum, Instruction and Assessment

**PATH 1**

Spanish 5 (IFL)  
Intensive Foreign Language (Level 1B)  
Novice High Proficiency by end of Gr. 5



Spanish 6 (IFL)  
Intensive Foreign Language (Level 2A)  
Novice High Proficiency by end of Gr. 6



Spanish 7 (IFL)  
Intensive Foreign Language (Level 2B)  
Novice High Proficiency by end of Gr. 7



Spanish 8 (IFL)  
Intensive Foreign Language (Level 2C)  
Intermediate Low Proficiency by end of Gr. 8



HS Spanish 3  
HS Conversational Spanish  
HS Spanish 4  
HS Spanish AP  
Spanish for Heritage Speakers I  
Spanish for Heritage Speakers II

**PATH 2**

Exploratory Spanish 6  
Novice Mid Proficiency



Spanish 7 (Level 1A)  
Novice Mid Proficiency by end of Gr. 7



Spanish 8 (Level 1B)  
Novice High Proficiency by end of Gr. 8



HS Spanish 2  
HS Spanish 3  
HS Conversational Spanish  
HS Spanish 4  
HS Spanish AP  
Spanish for Heritage Speakers I  
Spanish for Heritage Speakers II

**PATH 3**

Novice Mid Proficiency by end of Gr. 9

HS Spanish 1  
HS Spanish 2  
HS Spanish 3  
HS Conversational Spanish  
HS Spanish 4  
HS Spanish AP  
Spanish for Heritage Speakers I  
Spanish for Heritage Speakers II

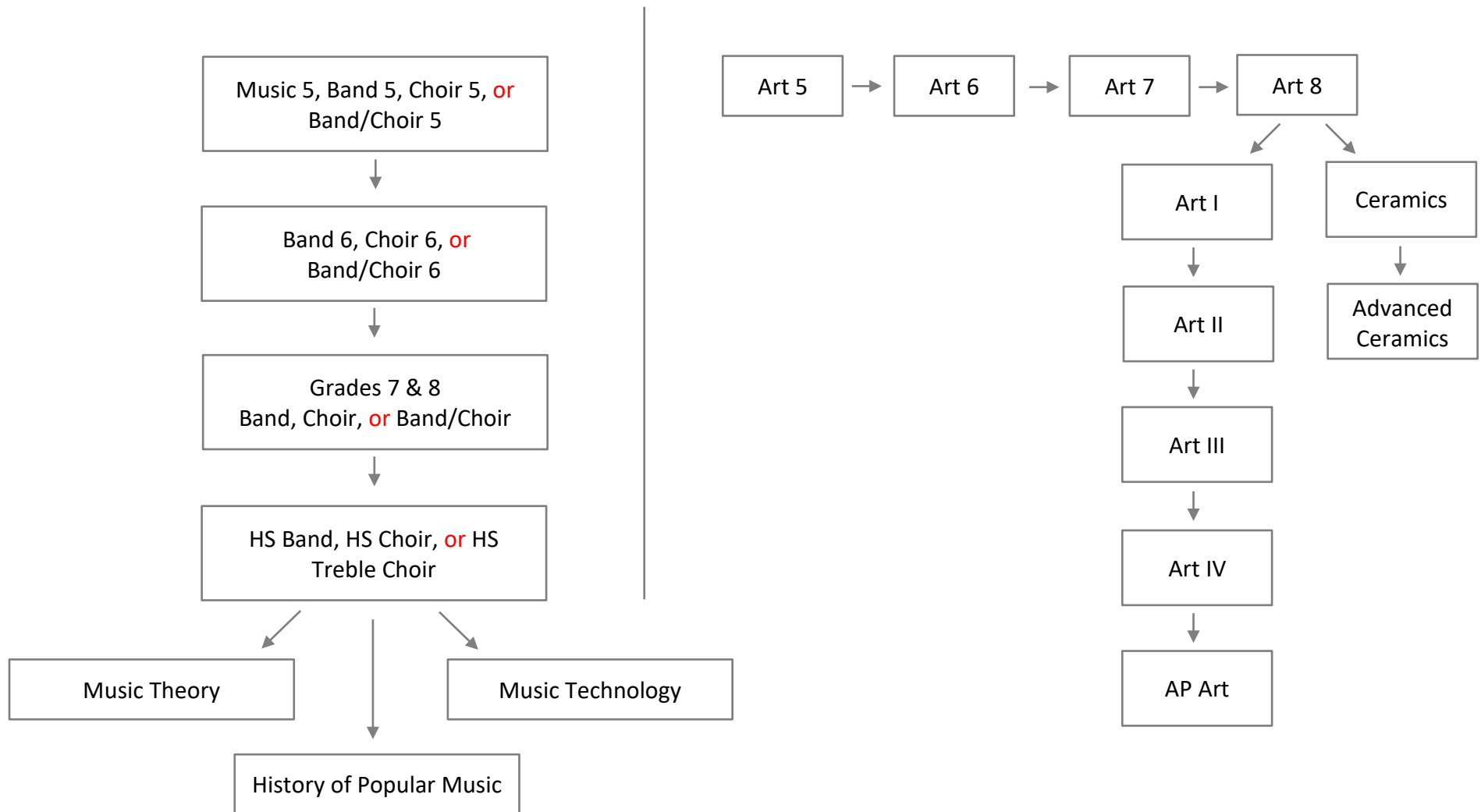
Expectations for language proficiency  
Level 1 Proficiency: Novice Mid  
Level 2 Proficiency: Novice High  
Level 3 Proficiency: Intermediate Low  
Level 4 Proficiency: Intermediate Mid



# FINE ARTS COURSE MAP

Office of Curriculum, Instruction and Assessment

REV. 1/28/19



\*Graduation Requirement – All students must earn 1 fine art credit in grades 9-12, or a fine art waiver may be granted if the student completes 2 semesters any time in grades 7-12. Students taking a career-technical pathway are exempted from the fine arts requirement.